

BACKGROUND

Concerns of the management:

- ~ Employees' attendance
- ~ Employees' transportation utilisation reporting

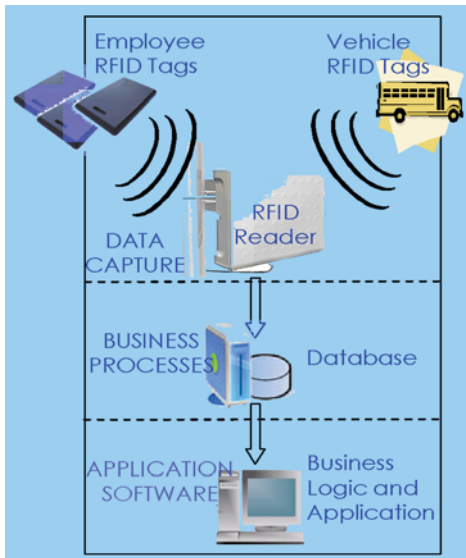
Problems faced:

- ~ Lacks consistency in attendance reporting
- ~ Lacks accuracy in transportation utilisation monitoring
- ~ Inflexible data maintenance
- ~ Inefficient information access & cost calculation

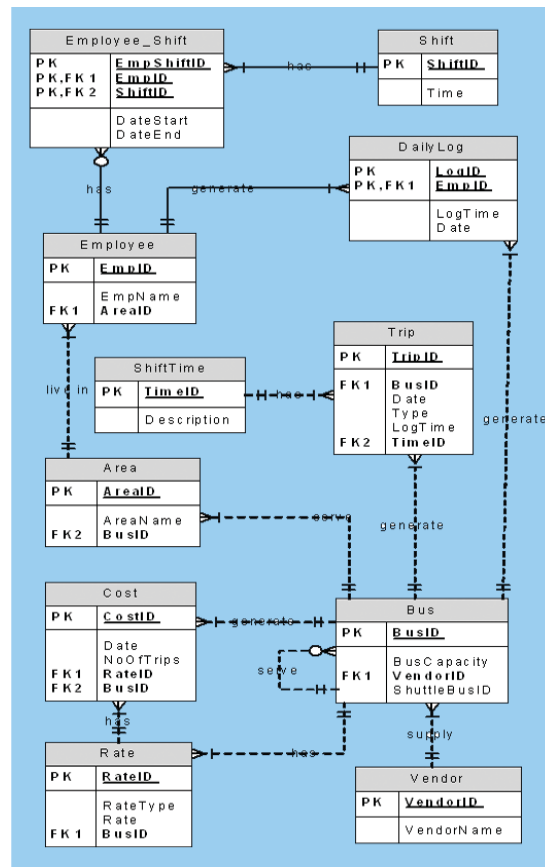


OBJECTIVES

- ~ To improve the consistency of the employees' attendance monitoring
- ~ To improve the accuracy of the transportation utilization calculation.
- ~ To provide an alternative database design to cater for data storage, maintenance and querying.
- ~ To develop an automated transportation cost calculation to reduce time and calculation errors.



Date	Area	Bus	Cost	Rate	Vendor
2008-01-01	Area 1	Bus 1	100.00	100.00	Vendor 1
2008-01-02	Area 2	Bus 2	200.00	200.00	Vendor 2
2008-01-03	Area 3	Bus 3	300.00	300.00	Vendor 3
2008-01-04	Area 4	Bus 4	400.00	400.00	Vendor 4
2008-01-05	Area 5	Bus 5	500.00	500.00	Vendor 5



Researchers Info

Abdul Razak Hussain
 Noraswaliza Abdullah
 Rosmiza Wahida Abdullah
 Mohd Fadzil Zulkifli

Tel : +6(06)-233 2503
 Fax : +6(06)-233 2508
 E-mail : razak@utem.edu.my

BENEFITS

- ~ Simplifying data collection
- ~ Improved access monitoring.
- ~ Improved transportation utilization monitoring.
- ~ Improved Productivity